



Haws®
AXION® MSR Barrier-Free Recessed Shower and Eye/Face Wash

model 8356WCDD

FEATURES & BENEFITS

CONSTRUCTION

18 Gauge Type 304 Stainless Steel recessed cabinet is a deep-drawn heavy duty structure with smudge resistant bead blast finish to provide a durable, long lasting product.

ACCESSIBILITY

Pull-down design accommodates all users including wheelchair accessibility.

SHOWERHEAD

AXION® MSR stainless steel showerhead uses a hydrodynamic design to give equal distribution of water throughout the entire footprint of flow.

EYE/FACE WASH

AXION® MSR eye/face wash head (patent pending) uses an inverted directional laminar flow to sweep contaminants away from the vulnerable nasal cavity.

DRAIN

Daylight drain feature allows the unit to be mounted where no in-wall drain exists.



SPECIFICATIONS

Model 8356WCDD barrier-free combination shower and eye/face wash shall include an AXION® MSR eye/face wash head shall feature inverted directional laminar flow which achieves Zero Vertical Velocity™ supplied by an integral 4.2 gpm flow control. Unit shall also include the AXION MSR hydrodynamic design stainless steel showerhead with 20 gpm flow control, a fully recessed wall mounted 18 Gauge, Type 304 stainless steel deep-drawn cabinet, wheel chair accessibility, and polished chrome-plated brass pull-down eye/face wash valve with easy access in-line strainer. Unit shall also include brass pipe and fittings, a drain pan, daylight drain, a front-access maintenance panel, universal sign, 1" NPT(F) inlet and 2" NPT(F) drain. Operating pressure is 30 - 90 psi (2.1 - 6.2 bar).

APPLICATIONS

Where the eyes, face, or body of any person may be exposed to injurious or corrosive materials, suitable facilities for quick drenching or flushing of the eyes, face, and body shall be provided within the work area for immediate emergency use. Emergency eye/face wash facilities and deluge showers shall be in unobstructed and accessible locations that require no more than 10 seconds for the injured person to reach. Model 8356WCDD is certified by CSA to meet the ANSI Z358.1 Standard for Emergency Eyewash and Shower Equipment.

OPTIONS

- ❑ Thermostatic Mixing Valve: Model 9201E AXION® Emergency Tempering Valve thermostatically mixes hot and cold water to provide a safe fluid supply for emergency showers and eyewash equipment, with a flow rate of 31 gpm (117.3 L).
- ❑ Emergency Alarm System: Model 9001, 1-1/4" 120 VAC emergency alarm and light system. Buzzer and flashing light are activated by an 1-1/4" double pole, double throw flow switch.
- ❑ ANSI Shower and Eyewash Testing Kit: Model 9011 ANSI compliance test kit.
- ❑ Three Sided Safety Sign: Model 9020 green and yellow ABS plastic 3-sided high visibility sign.

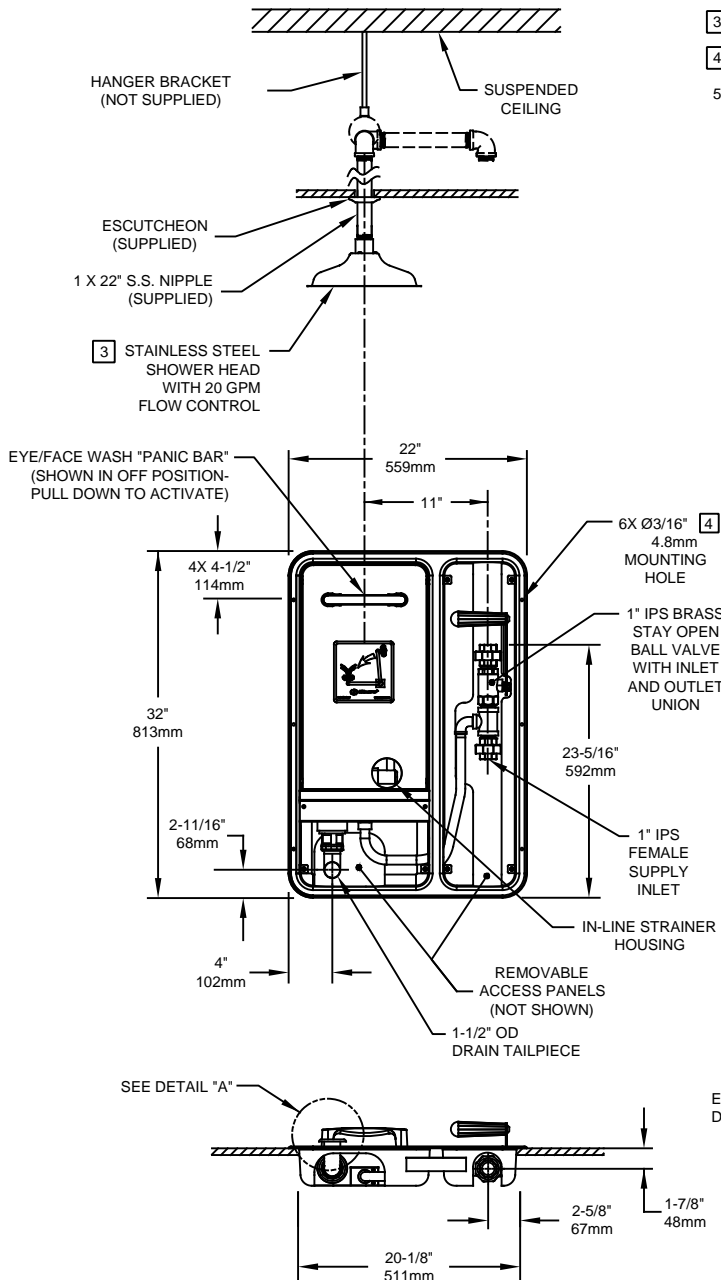
For more information, visit www.hawsc.com or call (888) 640-4297.



For more information about any Haws product please contact Modern Plant. Our team of experts are on call to answer all your questions and provide you with any advice.

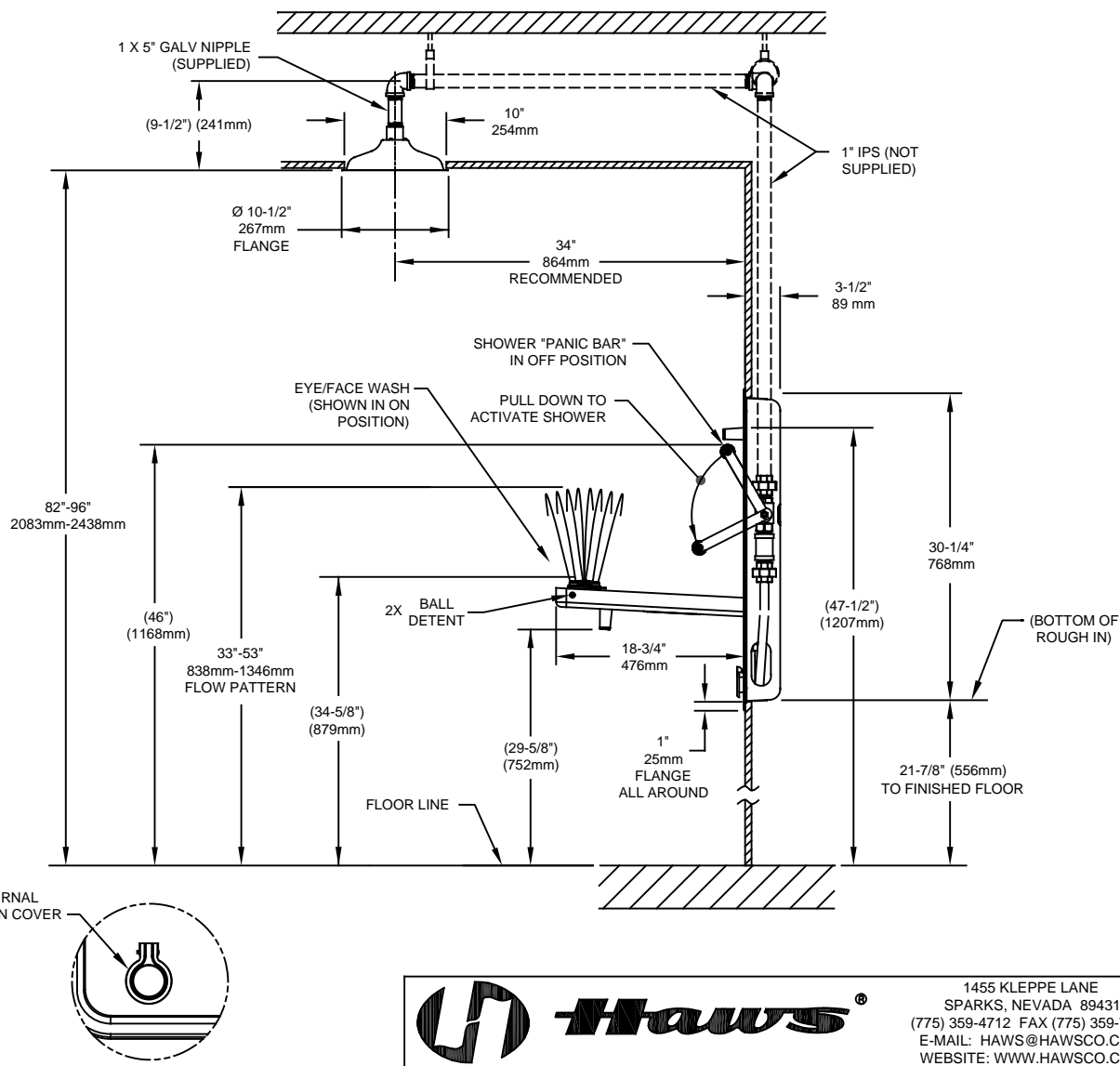
Web: www.safetyshowerstations.ie | Email: sales@modernplant.ie | Tel: 01 461 4300

OPTIONAL SHOWER HEAD INSTALLATION



NOTES:

1. WHEN INSTALLING THIS UNIT, LOCAL, STATE, OR FEDERAL CODES SHOULD BE ADHERED TO FOR INSTALLATION DIMENSIONS (LOCATIONS), WASTE AND SUPPLY REQUIREMENTS OTHER THAN SHOWN.
2. TO COMPLY WITH ANSI Z358.1-2014 FOR EMERGENCY EYEWASH OR EYE/FACE WASH: EYEWASH OR EYE/FACE WASH SHALL BE POSITIONED SUCH THAT FLUSHING FLUID PATTERN IS NOT LESS THAN 33" (838mm), NO GREATER THAN 53" (1346mm) FROM SURFACE ON WHICH USER STANDS, AND 6.0" (153mm) MINIMUM FROM WALL OR NEAREST OBSTRUCTION.
3. SHOWER MUST BE POSITIONED IN-LINE WITH EYE/FACEWASH HEAD TO ALLOW FOR SIMULTANEOUS USE BY THE SAME USER PER ANSI Z358.1.
4. MOUNTING HARDWARE NOT SUPPLIED.
5. DIMENSIONS MAY VARY BY $\pm 1/2"$ (13 mm).



DETAIL "A"
ROTATED FOR CLARITY

		1455 KLEPPE LANE SPARKS, NEVADA 89431 (775) 359-4712 FAX (775) 359-7424 E-MAIL: HAWS@HAWS.CO.COM WEBSITE: WWW.HAWS.CO.COM	
ECN NO. 4290	REVISED PER BY: ECN: 5242 VWC	MODEL(S)	8356WCDD
DRAWN: I. ROBERTS	DATE: 7/12/10	CHK'D: VWC	PART NUMBER 0002080154.D
APPROVED: FV	DATE: 11/23/17	SCALE: NA	DRAWING TYPE: INSTALLATION
		SIZE: A	SHEET 1 OF 1