



model 8720

Outdoor Overhead Tank Combination Shower

FEATURES & BENEFITS

CONSTRUCTION

Galvanized pipe, bronze valves, fiberglass tank and galvanized structural members provide superior defense in a highly corrosive environment.

QUALITY CONTROL

Fully assembled and tested for quick placement and hook-up.

EYE/FACE WASH

AXION® MSR eye/face wash head (patent pending) uses an inverted directional laminar flow to sweep contaminants away from the vulnerable nasal cavity.

SUPERIOR SAFETY

Enhanced victim comfort with AXION® eye/face wash and shower incorporating bronze valves for easy activation. Exceeds ANSI tepid water constant flow requirements (17+ min @20 GPM with 450 gallon tank) with tepid water to an insulated booth that is heated to 70° F (21° C) creating a comfortable environment for the user.

OTHER AVAILABLE CONFIGURATIONS

Class 1 Div 2 | Nema 4 and 4X standards | All Stainless Steel | Low Lead

VALVES

Eye/face wash valve is designed to make the flushing of contaminants occur with the simple push of a stainless steel flag. Shower ball valve is designed to make the flushing of fluid occur with the pull of a triangular lever. Both are made of bronze.

OPTIONS

For more information, visit www.hawsc.com or call (888) 640-4297.

PERFORMANCE SERIES



SPECIFICATIONS

Model 8720 Outdoor, Insulated Overhead Tank drench shower and eye/face wash within a 4.6' x 4.5' (1.4 x 1.37 m) all-weather fiberglass-reinforced structure covered with a bright yellow, chemically-resistant, water-proof coating, protected with UV inhibitors. The unit provides an operating temperature range of -40° to 100° F (-40° to 38° C). The use of an Advanced Programmable Monitoring Control System allows for real-time control of the operating system (Note: When a Programmable Logic Controller is used in climates of 32° or colder, consult with your Haws representative for more information). Includes dual spring-loaded, self-closing shower doors and trimmed with large directional arrows, large and small universal shower/eyewash signs, fiberglass floor grate, and 3" IPS drain. The internal booth temperature is maintained by a space heater. The overhead 450 gallon (1703 L) tank is constructed of insulated fiberglass with water temperature controlled by immersion heating. Optional model 9084 cleansing stick can be used to provide continual protection against pathogenic bacteria in the water for up to 3 years. The standard electrical system comes with a main disconnect and 480V 3ph standard (other voltages available). Emergency flushing is provided by a AXION® showerhead and an AXION® MSR eye/face wash head with greater than 3 GPM flow. The entire system meets the ANSI Z358.1 standard for emergency eyewash and shower equipment.

APPLICATIONS

Perfect for mining, Petro-Chemical, bio-diesel, and ethanol processing facilities as well any other remote outdoor location without a potable water supply where a drench shower and eyewash are required. Combination shower and eyewash is certified by CSA to meet the ANSI Z358.1 Standard for Emergency Eyewash and Shower Equipment.

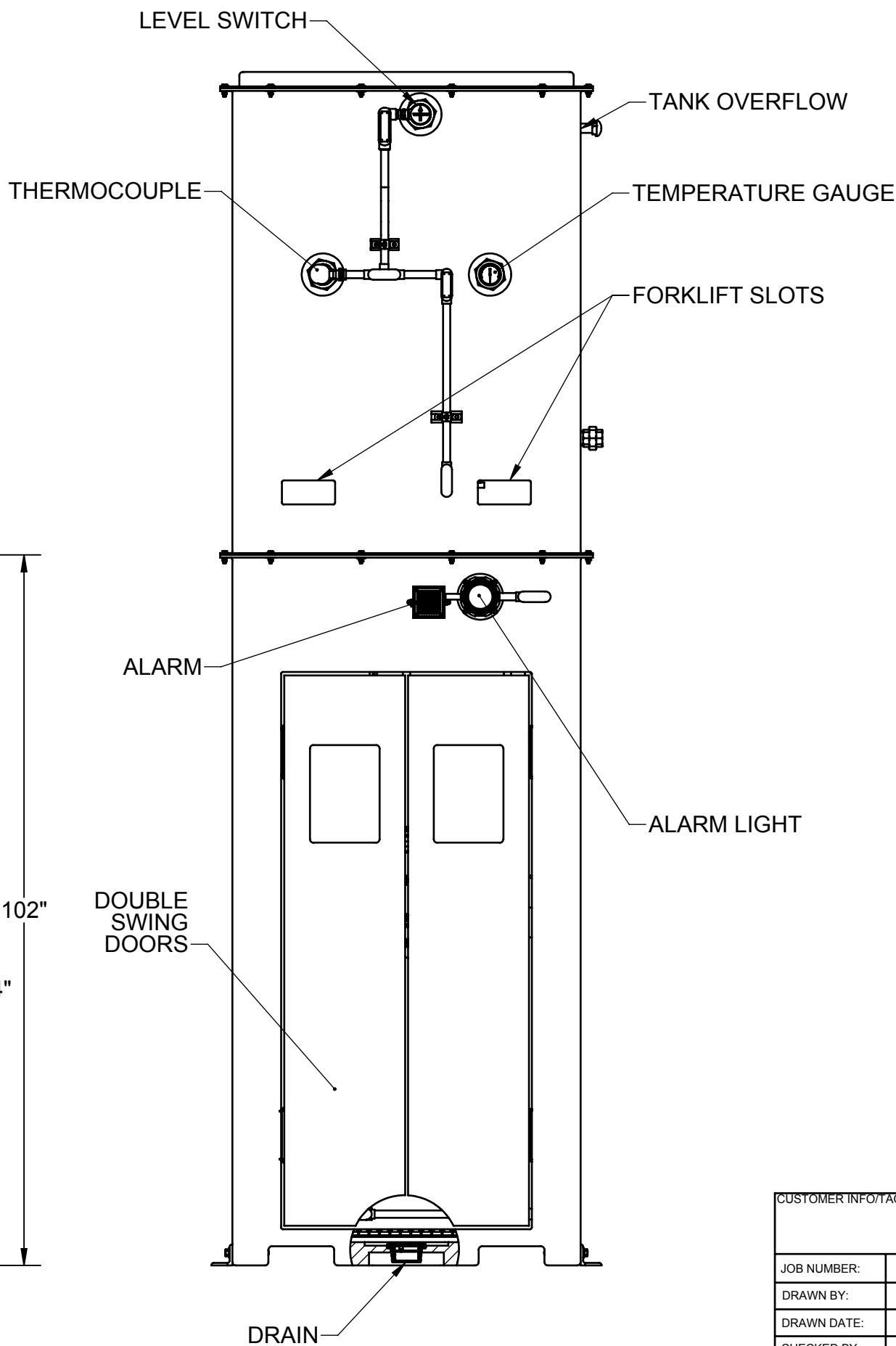
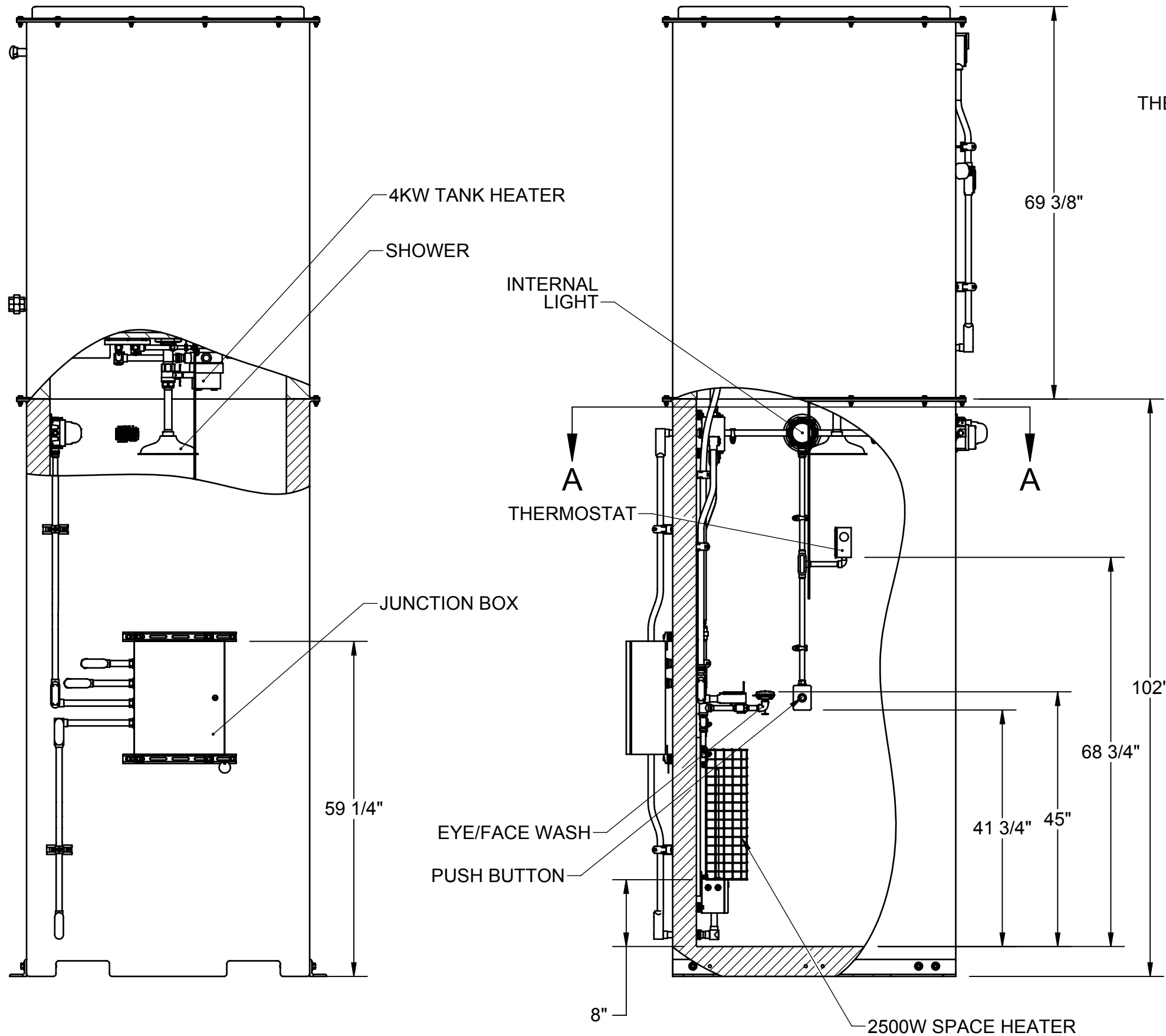
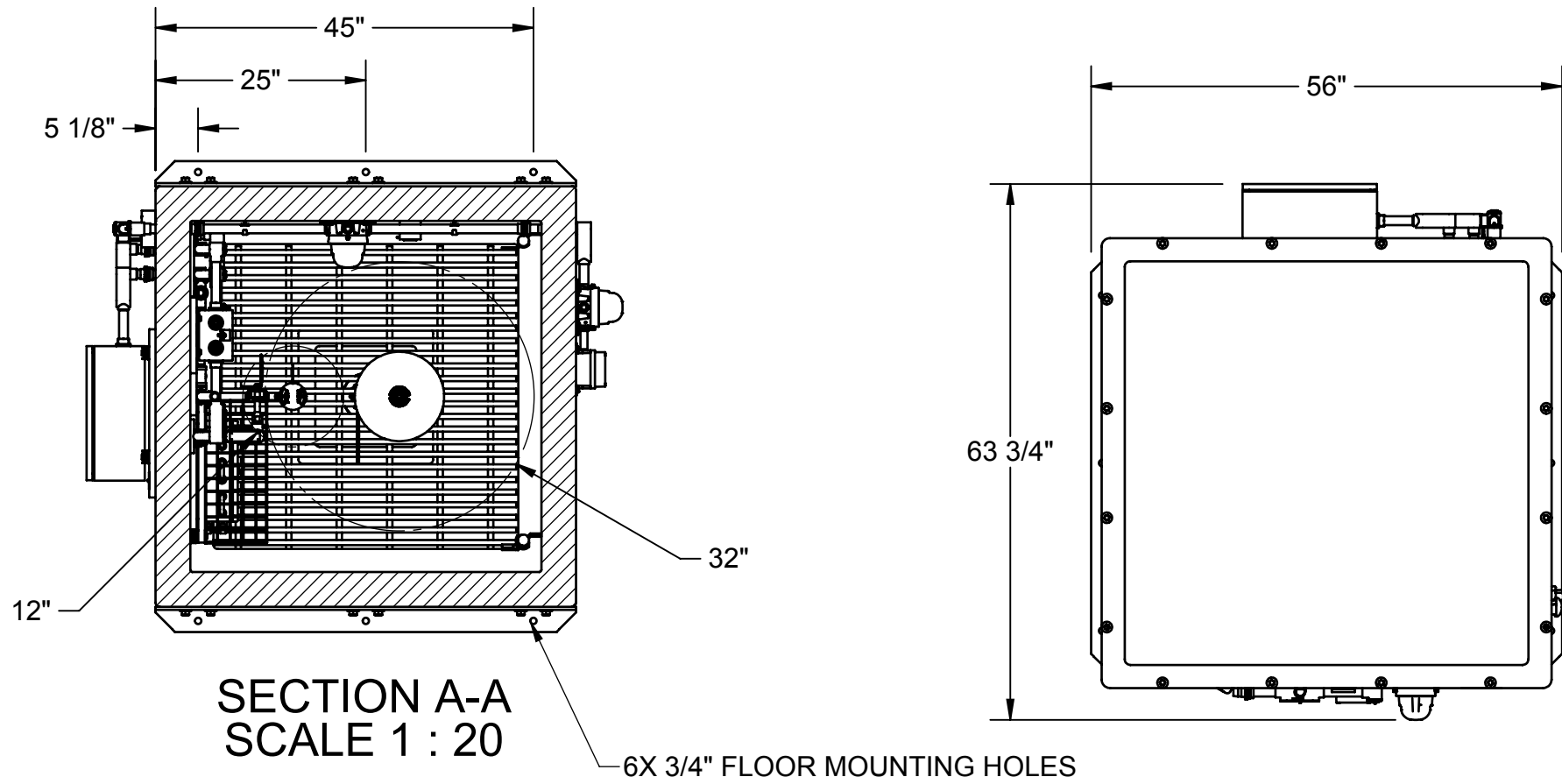


For more information about any Haws product please contact Modern Plant. Our team of experts are on call to answer all your questions and provide you with any advice.

Web: www.safetyshowerstations.ie | Email: sales@modernplant.ie | Tel: 01 461 4300

- NOTES:
1. DIMENSIONS IN US INCHES.
 2. ALL TOLERANCES: 1/2"
 3. AREA CLASSIFICATION: UNCLASSIFIED
 4. MATERIAL:
 - PIPE - GALVANIZED SCHEDULE 40
 - FITTINGS - GALVANIZED CLASS 150
 - VALVES - BRONZE
 5. ESTIMATED WEIGHT: DRY - 3500 LBS / WET - 6800 LBS

REVISIONS				
REV	DESCRIPTION	ECN	DATE	BY
1	INITIAL RELEASE	H0128	2/25/2016	ME
2	REMOVED DISCONNECT	H0143	04/26/2016	WK



CUSTOMER INFO/TAG #:		 1455 KLEPPE LANE SPARKS, NEVADA 89431 USA	
JOB NUMBER:		TITLE OUTDOOR OVERHEAD TANK SHOWER WITH EYEWASH	
DRAWN BY:	ME	<small>NOTICE OF PROPRIETARY INFORMATION INFORMATION CONTAINED HEREIN IS THE SOLE PROPERTY OF HAWS CORPORATION AND THIS DOCUMENT AND THE DATA DISCLOSED HEREIN OR HEREWITH IS NOT TO BE REPRODUCED, USED, OR DISCLOSED IN WHOLE OR IN PART TO ANYONE WITHOUT THE PERMISSION OF HAWS CORPORATION</small>	
DRAWN DATE:	02/09/16		
CHECKED BY:			
CHECKED DATE:			
APPROVED BY:		THIRD ANGLE PROJECTION 	
APPROVAL DATE:		SCALE 1:2	SIZE C
		PART NO. 8720.31	REV. 3