



model 8730

Outdoor Heated Shower and Eye/Face Wash Booth

FEATURES & BENEFITS

CONSTRUCTION

Galvanized pipe, bronze valves, fiberglass tank and galvanized structural members provide superior defense in a highly corrosive environment.

QUALITY CONTROL

Fully assembled and tested for quick placement and hook-up.

EYE/FACE WASH

AXION® MSR eye/face wash head (patent pending) uses an inverted directional laminar flow to sweep contaminants away from the vulnerable nasal cavity.

OTHER AVAILABLE CONFIGURATIONS

Class 1 Div 2 | Nema 4 and 4X standards | All Stainless Steel | Low Lead

VALVES

Eye/face wash valve is designed to make the flushing of contaminants occur with the simple push of a stainless steel flag. Shower ball valve is designed to make the flushing of fluid occur with the pull of a triangular lever. Both are made of bronze.

OPTIONS

For more information, visit www.hawsc.com or call (888) 640-4297.

PERFORMANCE SERIES



SPECIFICATIONS

Model 8730 heated enclosed shower and eye/face wash shall include a completely enclosed 5' x 4' (1.52 x 1.22 m) all-weather, fiberglass-reinforced structure covered with bright yellow, chemically-resistant, water-proof coating and protected with UV inhibitors. With a R-value of 7.5, it provides an operating temperature range of -40° to 100° F (-40° to 38° C). It shall include dual spring-loaded, self-closing shower doors, and is trimmed with large directional arrows, universal shower/eyewash sign, fiberglass floor grate, and 3" NPT inside caulk drain. There is a 20 gpm (75.7 L) AXION® hydrodynamic showerhead, an eye/face wash that features the medically acclaimed AXION® MSR eye/face wash head assembly (patent pending). This revolutionary inverted flow design is the only product on the market that provides a Medically Superior Response consistent with all EMT, emergency room and doctors' office protocols by sweeping contaminants away from the vulnerable nasal cavity, along with 3 gpm (11.4 L) to supply the side hanging drench hose. Chrome-plated brass stay-open shower, eye/face wash, and drench hose ball valves equipped with stainless steel ball and stem, and protected by scald and freeze bleed valves. The internal booth temperature is maintained by a space heater. The standard alarm system is flow switch activated, and provides local audible and visible alarms. Combination shower and eyewash is certified by CSA to meet the ANSI Z358.1 Standard for Emergency Eyewash and Shower Equipment

APPLICATIONS

Perfect for Petro-chemical, bio-diesel, and ethanol processing facilities, and other remote outdoor locations where drench showers with very cold water would pose a health hazard to employees and a liability to employers, or in shower areas exposed to cold air and wind where showering with very cold water could discourage proper flushing time.

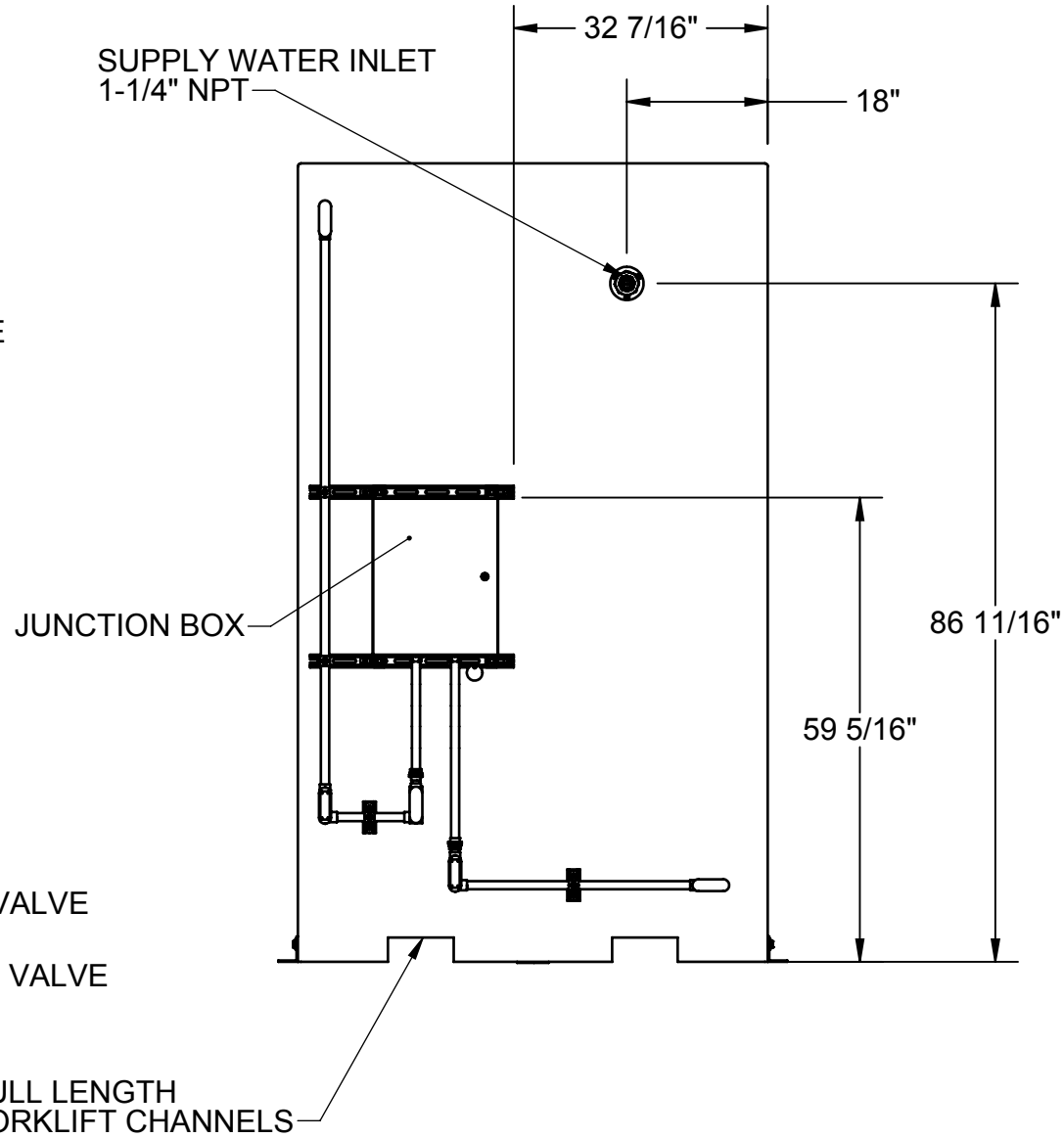
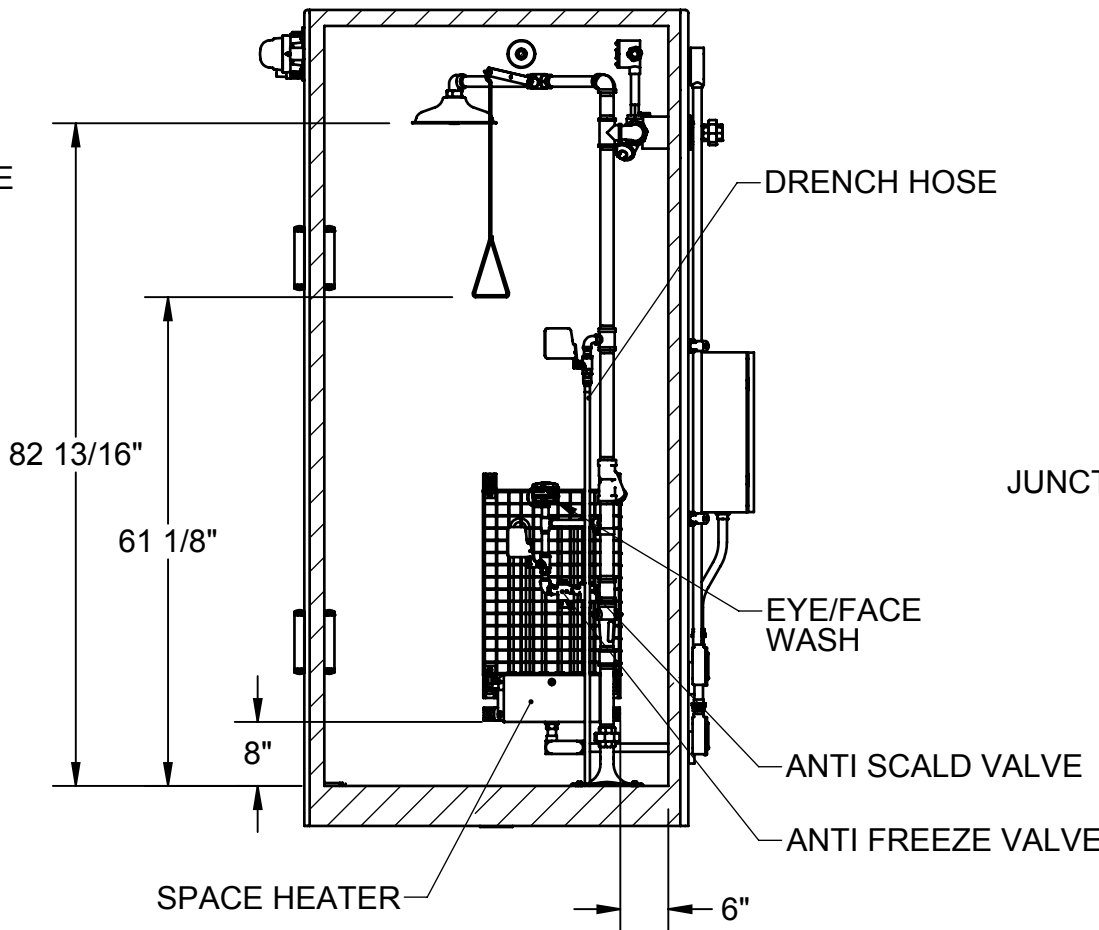
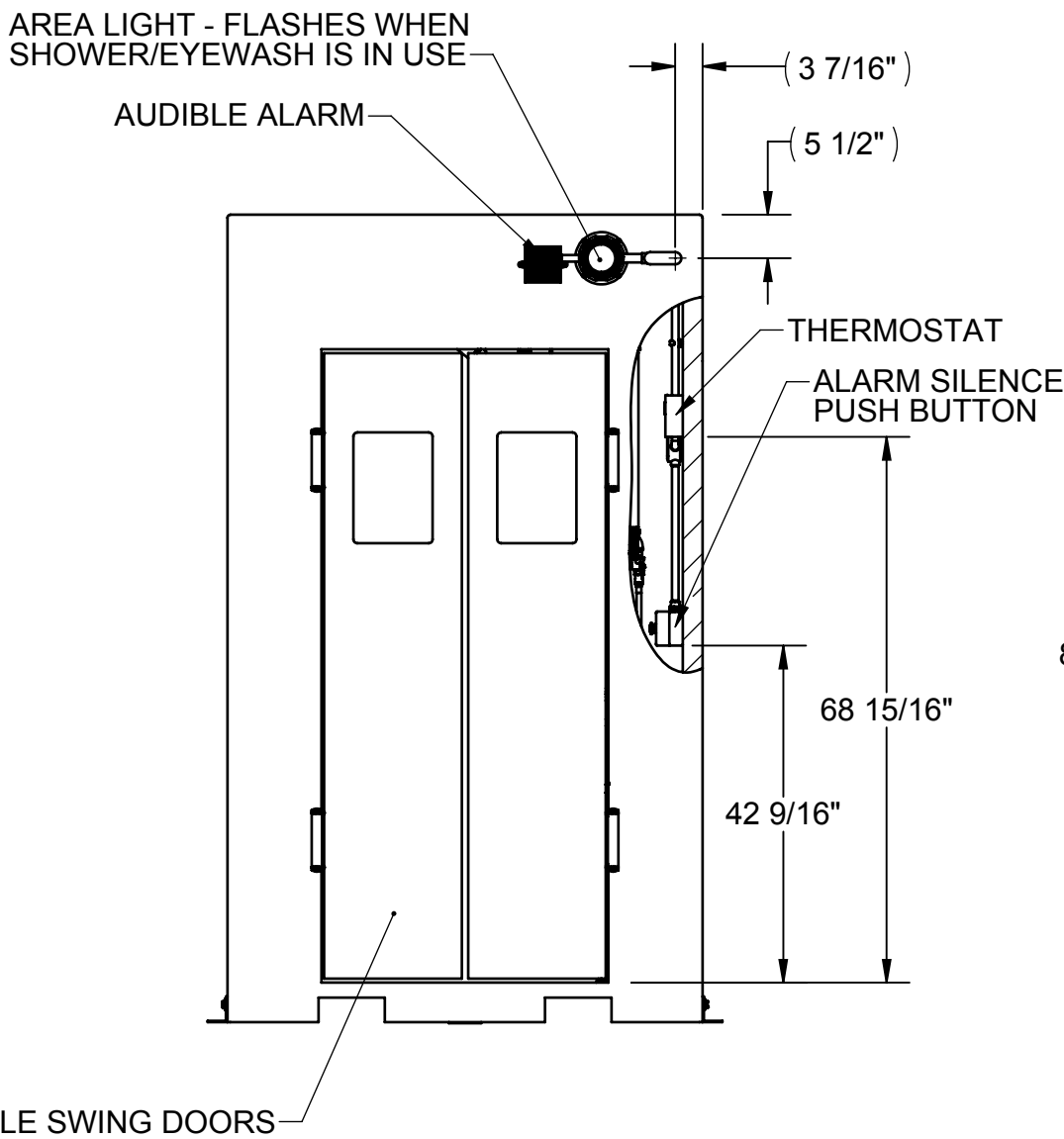
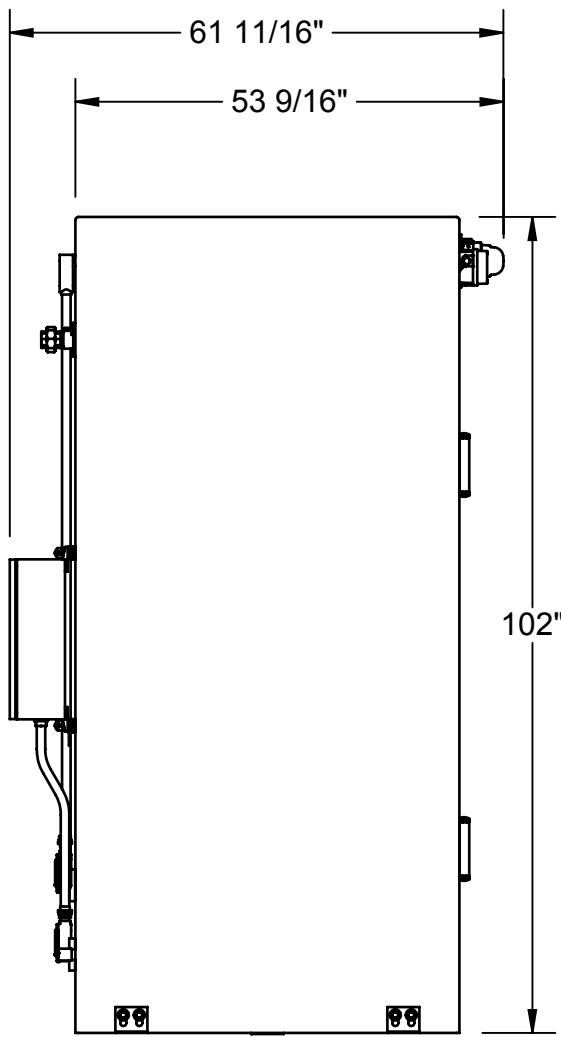
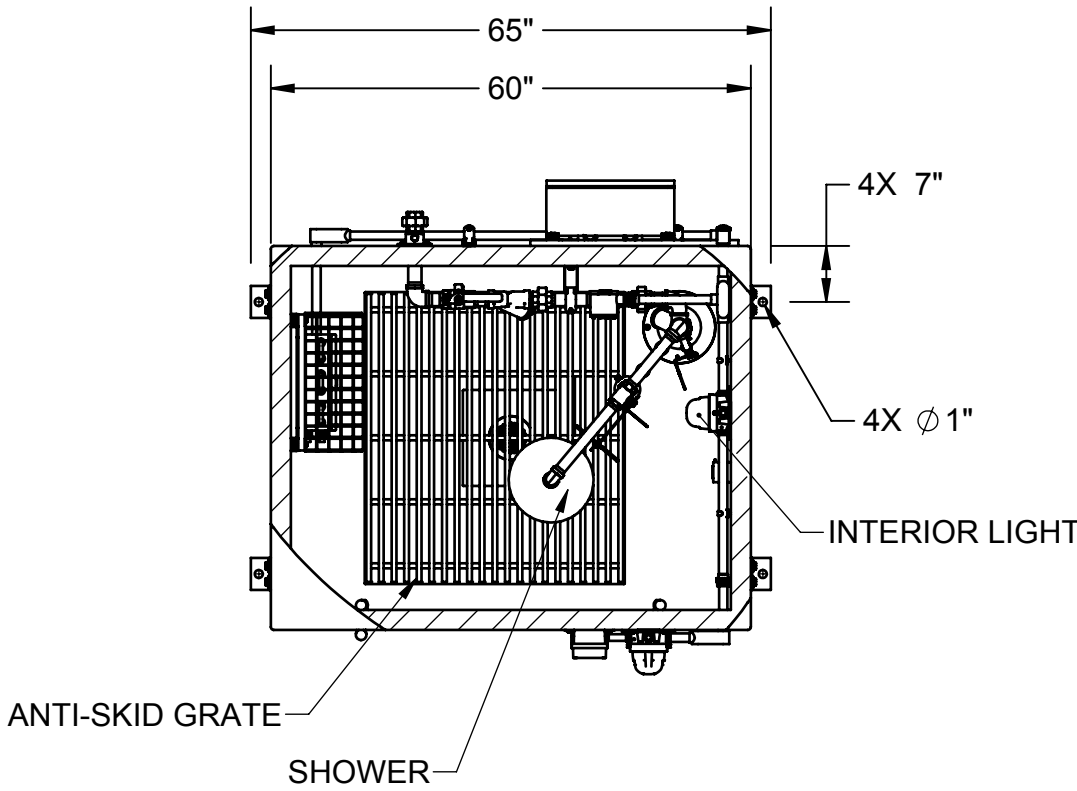


For more information about any Haws product please contact Modern Plant. Our team of experts are on call to answer all your questions and provide you with any advice.


Web: www.safetyshowerstations.ie | Email: sales@modernplant.ie | Tel: 01 461 4300

- NOTES:
1. DIMENSIONS IN US INCHES.
 2. ALL TOLERANCES: 1/2"
 3. AREA CLASSIFICATION: UNCLASSIFIED
 4. MATERIAL:
 - PIPE - GALVANIZED SCHEDULE 40
 - FITTINGS - GALVANIZED CLASS 150
 - VALVES - BRONZE
 5. ESTIMATED WEIGHT: DRY - 1200 LBS / WET - 1400 LBS

REVISIONS				
REV	DESCRIPTION	ECN	DATE	BY
1	INITIAL RELEASE	H0095	1/13/2016	ME
2	REMOVED DISCONNECT SWITCH	H0142	04/14/2016	WK
3	ADDED CONDUIT UNIONS: 3 QTY 0006184405 AND 1 QTY 0006196890; ADD CHANNEL DIMENSION & ORIENTATION OF HEATER IS VERTICAL	H0147	6/14/2016	ME



THE ATTACHED DESIGNS ARE CONSIDERED TRADE SECRETS AND POTENTIALLY PATENTABLE. IN ACCORDANCE WITH CONFIDENTIALITY AND NON-DISCLOSURE AGREEMENT, THESE DESIGNS IN ACTUAL OR CONCEPTUAL FORMS CANNOT BE DISCLOSED, REPRODUCED OR USED WITHOUT HAWS' EXPRESS WRITTEN CONSENT.

BILL OF MATERIAL				
APPROVALS	DATE	 1455 KLEPPE LANE SPARKS, NEVADA 89431 USA		
DRAWN EUSTAQUIO	1/13/16			
CHECKED		TITLE ENCLOSED BOOTH WITH SHOWER DRENCH HOSE AND EYEWASH		
APPROVED				
CUSTOMER INFO TAG #:		NOTICE OF PROPRIETARY INFORMATION INFORMATION CONTAINED HEREIN IS THE SOLE PROPERTY OF HAWS CORPORATION AND THIS DOCUMENT AND THE DATA DISCLOSED HEREIN OR HEREIN IS NOT TO BE REPRODUCED, USED, OR DISCLOSED IN WHOLE OR IN PART TO ANYONE WITHOUT THE PERMISSION OF HAWS CORPORATION		
SCALE 1:24	SIZE C	PART NO. 8730.31	INSTALLATION SH 1 OF 3	REV. 3