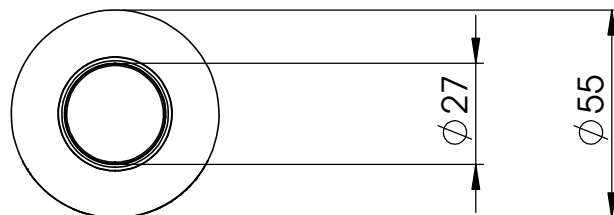
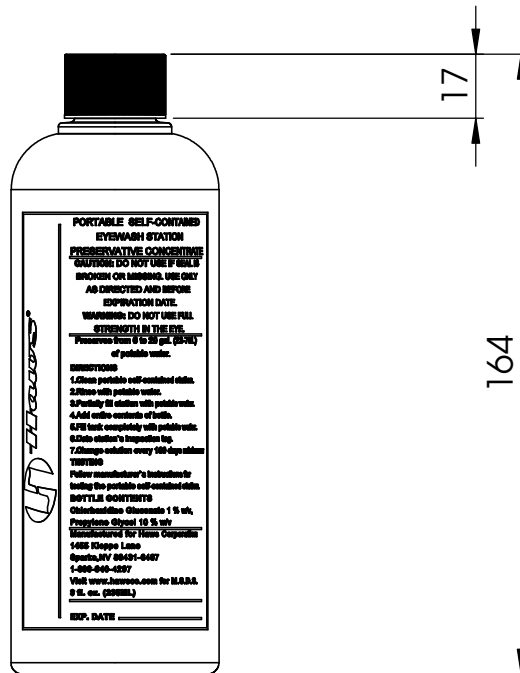




Important: please keep these instructions for maintenance purposes.



THESE DIMENSIONS MAY VARY +/- 1/2" (12,7mm)

SCALE 1:2

Model 9082

Sterile Antimicrobial Preservative Concentrate Eyewash Additive

TO ORDER MORE EYE WASH STATION PRESERVATIVE CONCENTRATE:

Contact your nearest Haws Representative or call Haws Customer Service at 1-888-640-4297, Sparks, Nevada.

WARNING:

1. MUST BE DILUTED WITH **POTABLE** WATER. DO NOT PUT DIRECTLY INTO EYES. Do not use if tamper evident twist-off top is broken or missing.
2. Contact with the eyes and mucosa can cause irritation, redness and pain.
3. **SEE PAGE 2 FOR MSDS AND EMERGENCY CONTACT INFORMATION.**

Mixing Instructions

Follow instructions on the side of each bottle. Units with capacities of 5-20 gallons (18.93 – 75.7L) should be mixed with the full 5 ounces (**148 ml**) contained in each bottle. It is recommended that the tentative potable water be replaced every 90 days. This procedure may be followed even with weekly 15-second testings. (Water consumed in testing, should be replaced with clean potable water).

Storage Instructions

Product should be stored between 36-104°F (2-40°C) and used between 59-86°F (15-30°C). Use before expiration date.

MATERIAL SAFETY DATA SHEET

SUPPLIER:

Haws Corporation

1455 Kleppe Lane
Poison Control
Sparks, NV 89431
USA

EMERGENCY TELEPHONE

INFORMATION: Telephone 1-888-640-4297 or 1-775-
359-4712 Monday - Thursday 6am-
4:30pm PST 6am-4:00pm PST Friday

EMERGENCY: If swallowed get medical help or call your

Center right away

N.D.: NO DATA AVAILABLE N.A.: NOT APPLICABLE

SECTION 1 – PRODUCT IDENTIFICATION

COMMERCIAL NAME:	Model 9082 Eyewash Additive, sterile antimicrobial preservative
CHEMICAL NAME:	1, 6-Di-(N-p-Chlorophenyl diguanide) hexane digluconate
CHEMICAL FORMULA:	(C ₂₂ H ₃₀ Cl ₂ N ₁₀ •2C ₆ H ₁₂ O ₇)
CHEMICAL FAMILY:	Organic, cationic.
CODE:	C249
PRODUCT USE:	Eyewash flushing concentrate for portable 5gal.to 20gal.(18.9L – 75.7L) emergency eyewash stations. MUST BE DILUTED WITH POTABLE WATER. DO NOT PUT DIRECTLY INTO EYES. Do not use if tamper evident twist-off top is broken or missing
WHMIS CLASSIFICATION:	N.A.
TDG CLASSIFICATION:	N.A.

SECTION 2 – INGREDIENTS

CONTROLLED INGREDIENTS (Over 1% (w/w) :

CHLORHEXIDINE GLUCONATE BP	CAS: 18472-51-0	1-5%	LD ₅₀ (MOUSE-ORAL)
≈1800 mg/Kg			
PROPYLENE GLYCOL USP	CAS: 57-55-6	10-20%	

SECTION 3 - PHYSICAL CHARACTERISTICS

PHYSICAL STATE, ODOR & APPEARANCE:	Clear, odourless, water white liquid
THRESHOLD ODOUR:	N.A.
BOILING POINT:	>100°C
pH AT 25°C:	5.0 – 7.0
SPECIFIC GRAVITY AT 20°C. (water=1):	.99
VAPOUR PRESSURE mmHg AT 20°C:	N.A.
VAPOUR DENSITY (air= 1) :	<1
WATER SOLUBILITY:	good
FREEZING POINT:	N.A.
EVAPORATION RATE (WATER=1):	approximately 1
PARTITION COEFFICIENT (WATER/OIL):	N.D. miscible with water.
FLASH POINT:	non-flammable
AUTOIGNITION TEMPERATURE:	N.A.

SECTION 4 – REACTIVITY

STABILITY: Chemically stable under normal conditions.
CONDITIONS TO AVOID: Avoid exposure to heat.
INCOMPATIBLITE: Avoid strong oxidizing materials
HAZARDOUS DECOMPOSITION PRODUCTS: Carbon Monoxide
HAZARDOUS POLYMERISATION: None.

SECTION 5 - FIRE AND EXPLOSION HAZARD

FLAMMABILITY: Non-flammable liquids.

SPECIAL FIRE HAZARDS: N.A.

HAZARDOUS COMBUSTION PRODUCTS: Carbon monoxide and carbon dioxide can be produced.

FIRE FIGHTING MEDIA: Use alcohol-resistant foam, carbon dioxide or chemical powders for small fires. For larger amounts (multiple packages / pallets) of product: Since toxic, corrosive or flammable vapours might be evolved from fires involving this product and associated packaging, self contained breathing apparatus and full protective equipments are recommended for firefighters. If possible, contain and collect firefighting water for later disposal.

SECTION 6 - TOXICOLOGICAL PROPERTIES

EFFECTS OF ACUTE EXPOSURE:

EYES: Contacts with the eyes and mucosa can cause irritation, redness and pain.

SKIN: In normal use, does not cause irritation. However, sensitive individuals may develop minor skin irritation.

INHALATION: N.A.

INGESTION: Chlorhexidine Gluconate has a relatively low LD50 value since it is poorly absorbed by the intestine. It is rather eliminated in the feces. The Isopropyl Alcohol is however more harmful if ingested. It may irritate the gastro-intestinal track, affect the nervous system, liver and kidneys. May cause nausea, headache and alter vision.

EFFECTS OF CHRONIC EXPOSURE:

Prolonged and repeated exposure by application on the skin may cause a chronic skin irritation.

SECTION 7 - PREVENTATIVE MEASURES

AS NEEDED, APPLY THE APPROPRIATE MEASURES ACCORDING TO THE AMPLITUDE OF EXPOSURE.

SKIN: Use gloves when handling,

EYES: Avoid any contact with the eyes.

RESPIRATORY TRACT: N.A.

OTHER PROTECTIVE EQUIPMENTS: N.A.

VENTILATION: N.A.

IN CASE OF SPILL OR LEAK: Absorb spills with a neutral absorbing material. Rinse with water.

WASTE DISPOSAL: As dictated by the federal, provincial and municipal, rules.

HANDLING PROCEDURES AND STORAGE REQUIREMENTS: Use with care. Keep bottle tightly closed and store at room temperature. Avoid exposure to temperatures above 49°C.

SECTION 8 – FIRST AID MEASURES

EYES: Flush eyes immediately with large volumes of water continuously for 20 minutes. Consult a physician.

SKIN: In case of accidental contact with skin, wash with soap and rinse with water. If irritation appears, it will probably disappear if not, cease using and consult a physician.

INHALATION: N.A.

INGESTION: Do not induce vomiting. Give water. In case of non-induced vomiting, lean victim forward to prevent any risk of asphyxia. Never give any liquid to an unconscious person. Get medical attention.

SECTION 9 - OTHER INFORMATION

REVISED IN:

16Aug12 January 3, 2012

REPLACE VERSION OF:

September 1, 1998, March 10, 2009, February 10, 2010

The information contained in this form has been compiled from sources believed to be reliable and is accurate to the best of our knowledge. However, we cannot give any guarantee regarding information from other sources and expressly do not make any warranties nor assume any liability for its use.

SEZIONE 8 – MISURE DI PRIMO SOCCORSO

OCCHI: Sciacquare subito gli occhi con molta acqua per 20 minuti. Consultare un medico.

PELLE: In caso di contatto accidentale con la pelle lavare la zona interessata con il sapone e risciacquare con acqua. Se si manifesta una irritazione, essa probabilmente scomparirà da sola. In caso contrario, non utilizzare ulteriormente il prodotto e consultare un medico.

INALAZIONE: N.A.

INGESTIONE: Non indurre il vomito. Somministrare acqua. In caso di vomito non indotto, piegare in avanti la persona infortunata per evitare eventuali pericoli di soffocamento. Non somministrare mai liquidi a una persona svenuta. Richiedere l'intervento di un medico.

SEZIONE 9 - INFORMAZIONI SUPPLEMENTARI

ULTIMA REVISIONE: 16 Agosto 2012

SOSTITUISCE LA VERSIONE DEL: 1 Settembre 1998, 10 Marzo 2009, 10 Febbraio 2010

Le informazioni contenute nel presente documento sono state raccolte da fonti affidabili e sono corrette allo stato attuale delle nostre conoscenze. Tuttavia non possiamo garantire la correttezza delle informazioni provenienti da altre fonti e decliniamo ogni responsabilità né ci assumiamo alcuna garanzia per il loro utilizzo.



For more information about any Haws product please contact Modern Plant. Our team of experts are on call to answer all your questions and provide you with any advice.

Web: www.safetyshowerstations.ie | Email: sales@modernplant.ie | Tel: 01 461 4300