

FEATURES & BENEFITS

QUALITY CONTROL

Fully assembled and tested for quick placement and hook-up.

BLENDING SYSTEM

Safe, fully engineered thermostatic mixing valve for mixing large volumes of hot and cold water guarded with anti-scald protection and full flow cold water bypass to provide tempered water in adverse situations.

TANK SYSTEM OPTIONS

119 Gallon (450 L) Tank (Option No. 21): Stores enough hot water to provide a single 15 minute shower and eye/face wash use. Also available in ASME - Option 22. 325 Gallon (1230 L) Tank (Option No. 23) stores enough hot water to provide two 15 minute shower and eye/face wash uses before tank recovery is required.

STEAM SYSTEMS

Steam Heat Exchanger (Option No. 24): Feed forward instantaneous heat exchanger. Requires 15 PSIG, max. 1300 lb./hr. steam supply.

EYE/FACE WASH

AXION® MSR eye/face wash head (patent pending) uses an inverted directional laminar flow to sweep contaminants away from the vulnerable nasal cavity.

ELECTRICAL SYSTEM OPTIONS

Haws provides systems with various voltage options. Standard assemblies are built with 480V 3ph for quick shipment. NEMA 4 tank (Option 31), steam (Option 36). NEMA 7 Class I, DIV2, Group B, C, D tank (Option 32), steam (Option 38) (Class I, DIV I also available)

PERFORMANCE SERIES

Offering a standardized line of water tempering solutions providing shorter lead times, advanced compliance, cost efficiencies, and customizable configuration options.

MONITORING

Advanced Programmable Monitoring Control System provides real-time digital display with three modes; standard operating, alarm cycles and fault history. Capabilities include automatic alarm silencing reset, customer control room synchronization, seasonal operation scheduling, and more.

PERFORMANCE SERIES



SPECIFICATIONS

Model 8710 heated enclosed shower and eye/face wash shall include a 5' x 9' (1.52 x 2.74 m) bright yellow, chemically-resistant, water-proof coated booth has an R-value of 7.5, provides an operating temperature range of -40° to 100° F (-40° to 38° C), and shall include dual spring-loaded, self-closing shower doors, equipment room door, and removable service panel. The use of an Advanced Programmable Monitoring Control System allows for real-time control of the operating system. The booth is trimmed with large directional arrows, large and small universal shower/eyewash signs, fiberglass floor grate, and 3" IPS inside caulk drain. The ball valves are equipped with stainless steel ball and stems, and protected by scald and freeze bleed valves. The internal booth temperature is maintained by a space heater. The standard alarm system is flow switch activated, and provides local audible and visible alarms. The tempered blending system will include an integral hot water supply, whether stored or supplied by steam, and will incorporate fail-safe features like anti-scald protection and full flow cold water bypass. There is the medically acclaimed AXION® 20 gpm (75.7 L) showerhead and AXION® MSR eye/face wash head assembly (patent pending), along with a 3 gpm (11.4 L) side hanging drench hose.

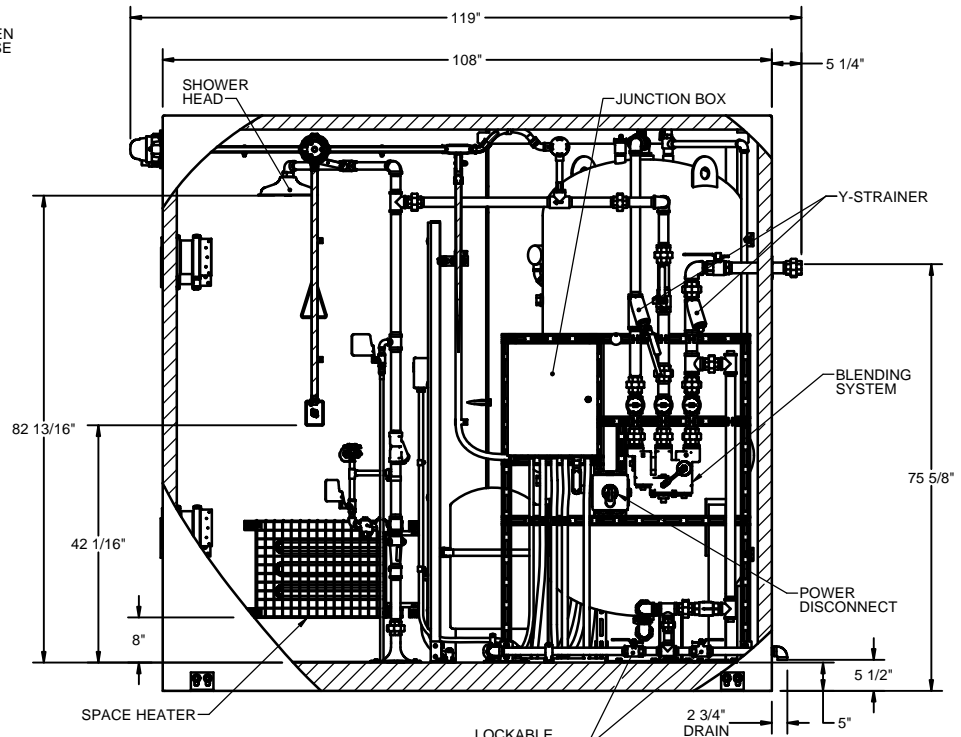
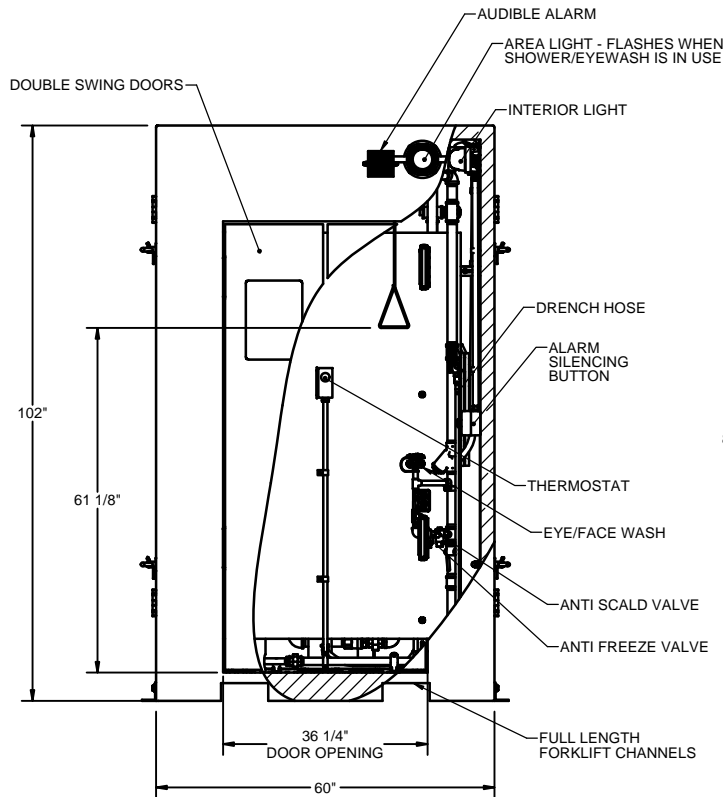
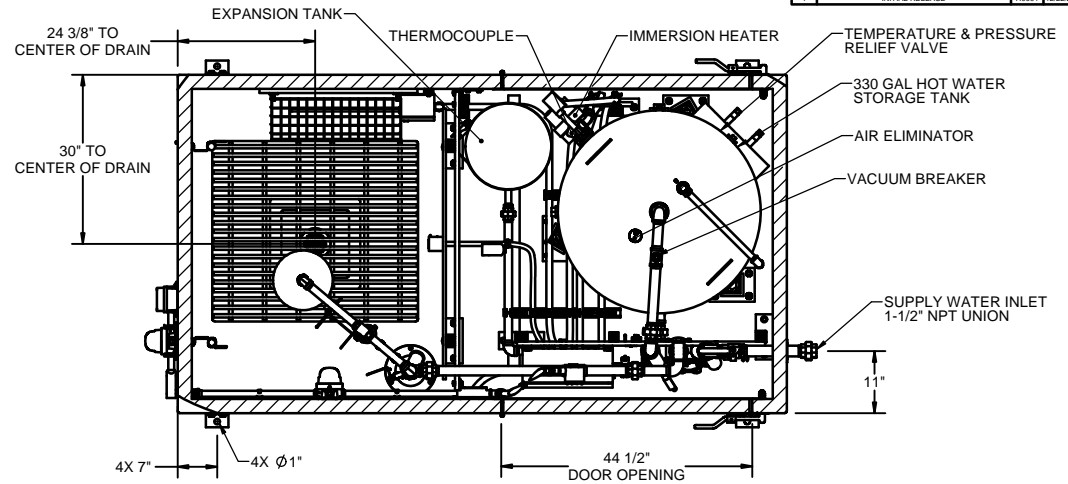
OPTIONS

For more information, visit www.hawsc.com or call (888) 640-4297.

APPLICATIONS

Perfect for Petro-chemical, bio-diesel, and ethanol processing facilities, and other remote outdoor locations where drench showers with very cold water would pose a health hazard to employees and a liability to employers, or in shower areas exposed to cold air and wind where showering with very cold water could discourage proper flushing time. Model is certified by CSA to meet the ANSI Z358.1 Standard for Emergency Eyewash and Shower Equipment.

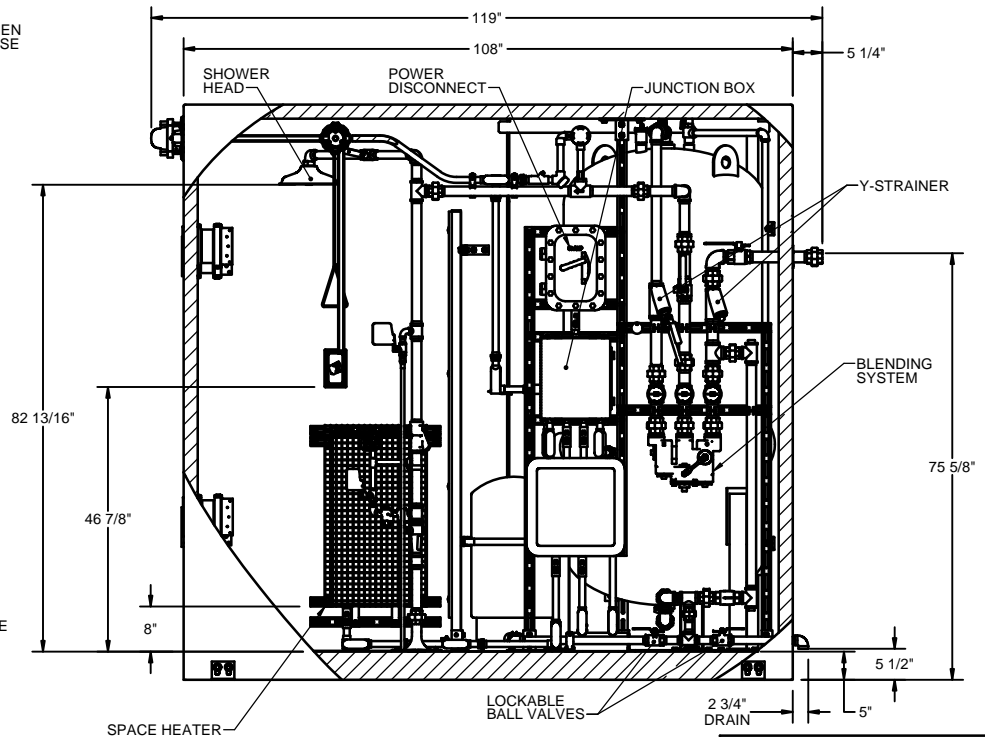
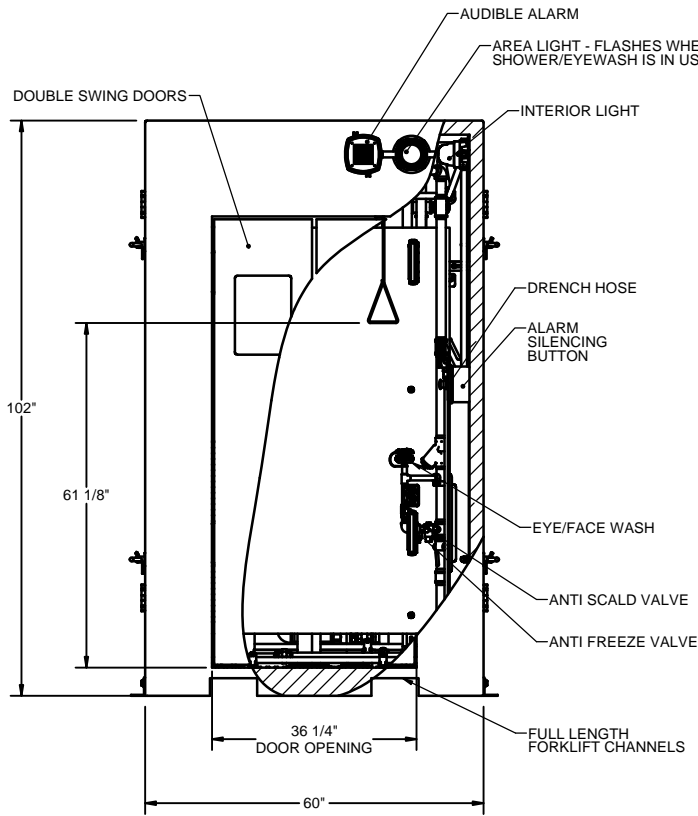
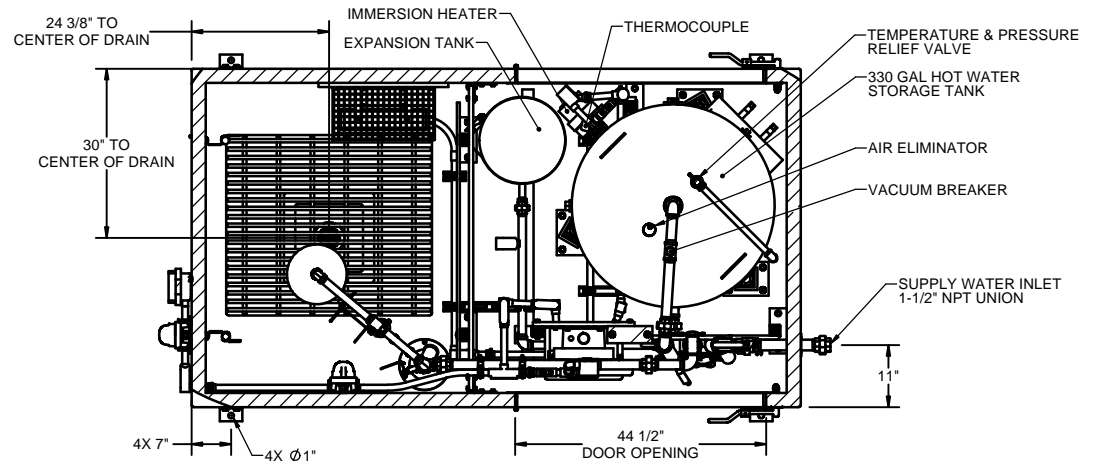
- NOTES:
1. DIMENSIONS IN US INCHES.
 2. ALL TOLERANCES: 1/2"
 3. AREA CLASSIFICATION: UNCLASSIFIED
 4. MATERIAL:
PIPE - GALVANIZED SCHEDULE 40
FITTINGS - GALVANIZED CLASS 150
VALVES - BRONZE
 5. ESTIMATED WEIGHT: DRY - 3200 LBS / WET - 6200 LBS



THE ATTACHED DESIGNS ARE CONSIDERED TRADE SECRETS AND POTENTIALLY PATENTABLE. IN ACCORDANCE WITH CONFIDENTIALITY AND NON-DISCLOSURE AGREEMENT, THESE DESIGNS IN ACTUAL OR CONCEPTUAL FORMS CANNOT BE DISCLOSED, REPRODUCED OR USED WITHOUT HAWS' EXPRESS WRITTEN CONSENT.

APPROVALS		DATE	BILL OF MATERIAL	
DESIGNED	BY	12/22/15	Haws® 1455 KLEPPER LANE SPARKS, NEVADA 89431 USA	
CHECKED	BY	12/22/15	TITLE	
APPROVED	BY	12/22/15	TEMPERING BOOTH W/ SHOWER-EYEWASH	
CUSTOMER INFO TAG #:			NOTICE OF PROPRIETARY INFORMATION: INFORMATION CONTAINED HEREIN IS THE SOLE PROPERTY OF HAWS CORPORATION AND THIS DOCUMENT AND THE DATA ENCLOSED HEREIN OR HEREWITH IS NOT TO BE REPRODUCED, COPIED, OR USED FOR ANY PURPOSES WITHOUT THE EXPRESS WRITTEN CONSENT OF HAWS CORPORATION.	
000000			THIRD ANGLE PROJECTION	
SCALE			INSTALLATION	
1/24			REV	
C			1	
8710.23.31			1	

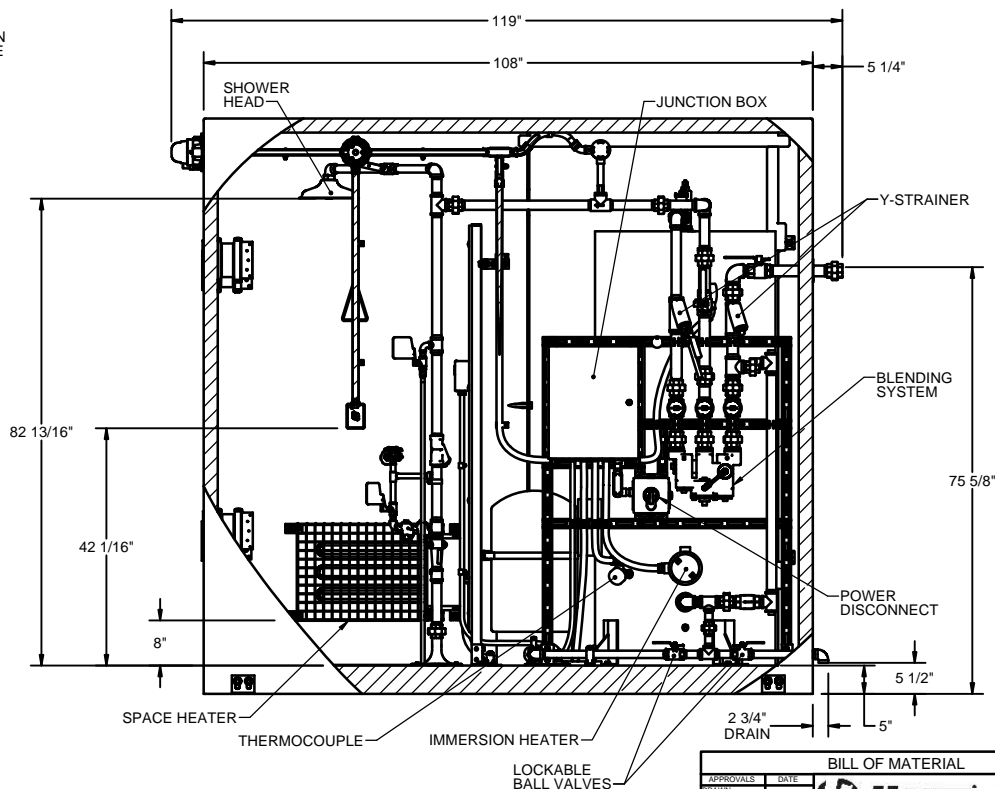
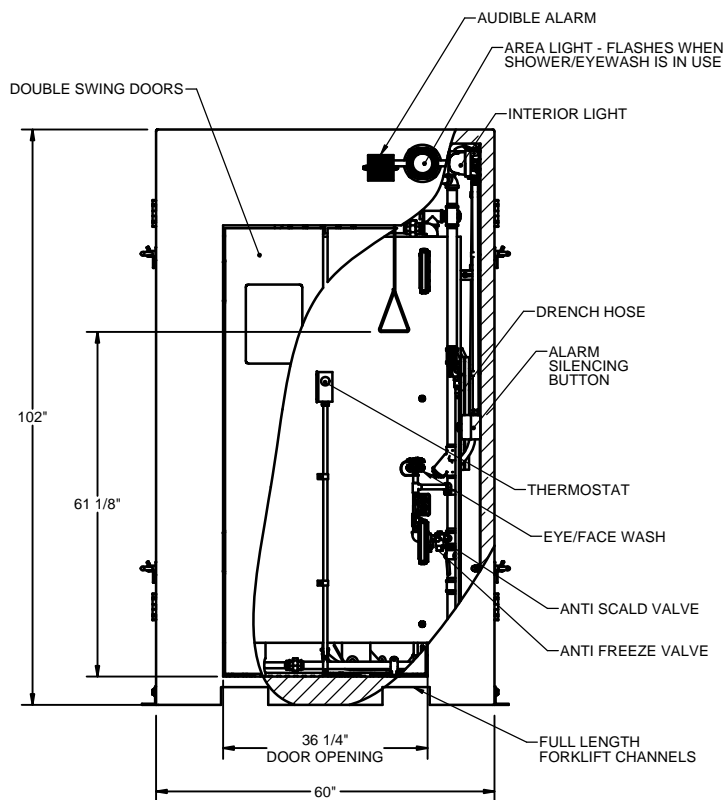
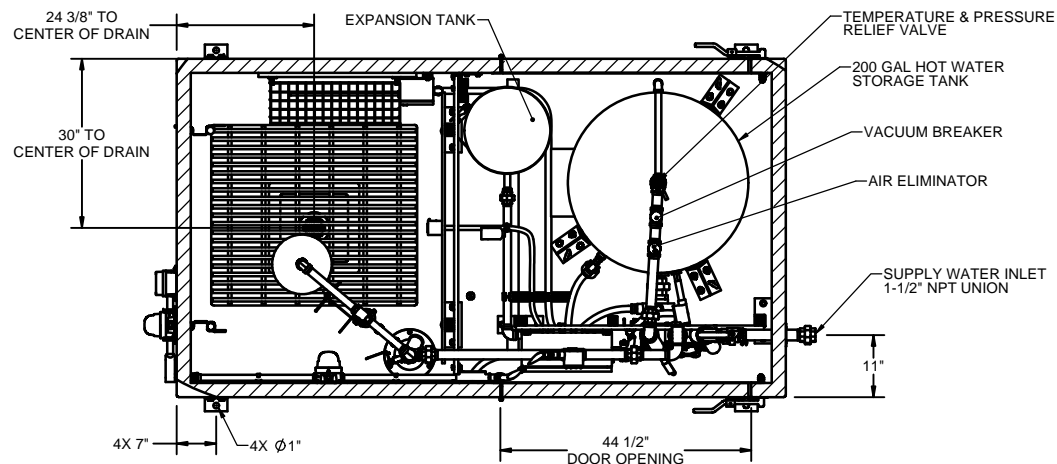
- NOTES:
1. DIMENSIONS IN US INCHES.
 2. ALL TOLERANCES: 1/2"
 3. AREA CLASSIFICATION: C1D2 GROUP B,C,&D T2D
 4. MATERIAL:
PIPE - GALVANIZED SCHEDULE 40
FITTINGS - GALVANIZED CLASS 150
VALVES - BRONZE
 5. ESTIMATED WEIGHT: DRY - 3200 LBS / WET - 6200 LBS



THE ATTACHED DESIGNS ARE CONSIDERED TRADE SECRETS AND POTENTIALLY PATENTABLE. IN ACCORDANCE WITH CONFIDENTIALITY AND NON-DISCLOSURE AGREEMENT, THESE DESIGNS IN ACTUAL OR CONCEPTUAL FORMS CANNOT BE DISCLOSED, REPRODUCED OR USED WITHOUT HAWS' EXPRESS WRITTEN CONSENT.

APPROVALS		DATE	BILL OF MATERIAL	
DESIGNED	12/22/15		Haws® 1455 KLEPPER LANE SPARKS, NEVADA 89431 USA	
CHECKED	12/22/15		TITLE	
APPROVED	12/22/15		TEMPERING BOOTH W/ SHOWER-EYEWASH	
CUSTOMER IMP/PTAG #: 000000			NOTICE OF PROPRIETARY INFORMATION: INFORMATION CONTAINED HEREIN IS THE PROPERTY OF HAWS CORPORATION AND THIS DOCUMENT AND THE DATA ENCLOSED HEREIN CAN BE REPRODUCED OR TRANSMITTED IN ANY FORM OR BY ANY MEANS WITHOUT THE EXPRESS WRITTEN PERMISSION OF HAWS CORPORATION.	
SCALE: 1/4" = 1'-0"			THIRD ANGLE PROJECTION	
PART NO. 8710.23.32			INSTALLATION SH 1 OF 1	
REV. 1			REV. 1	

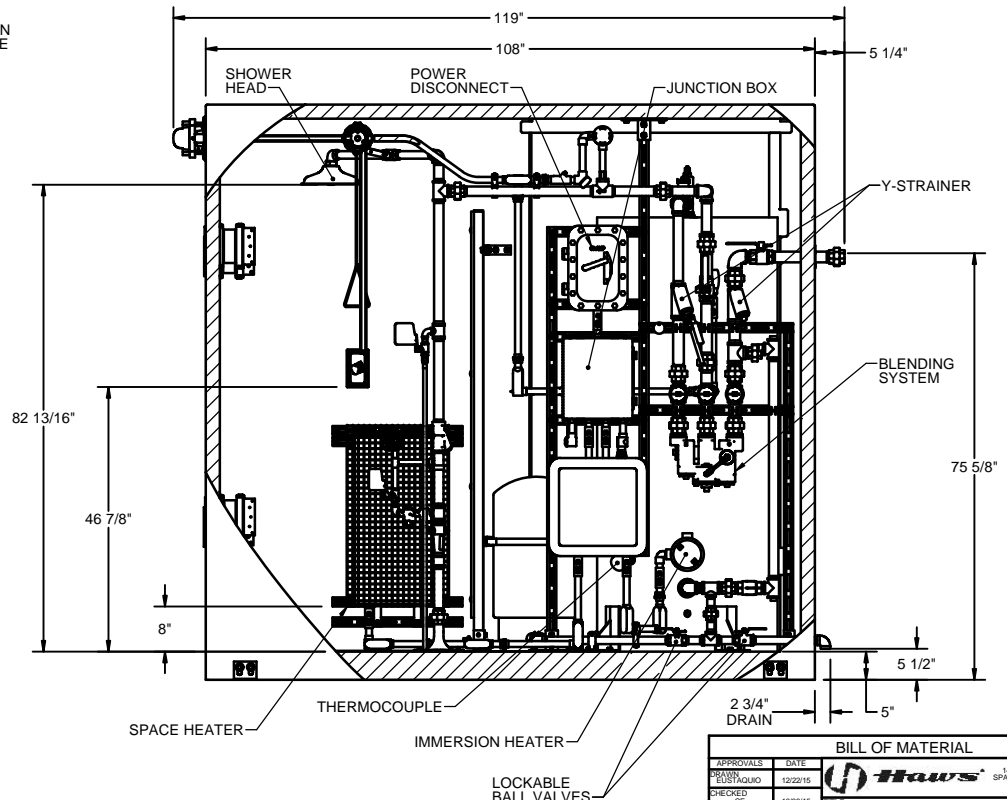
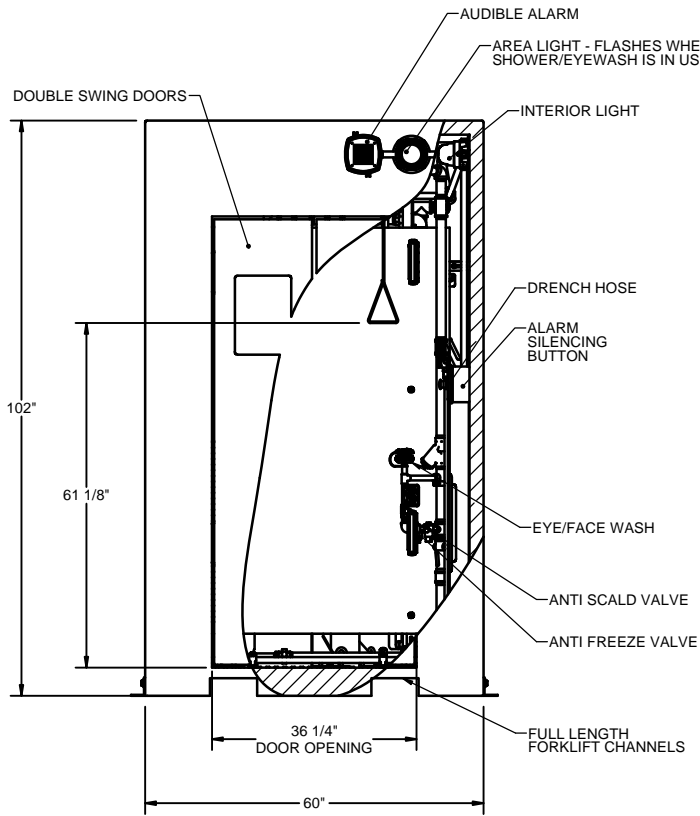
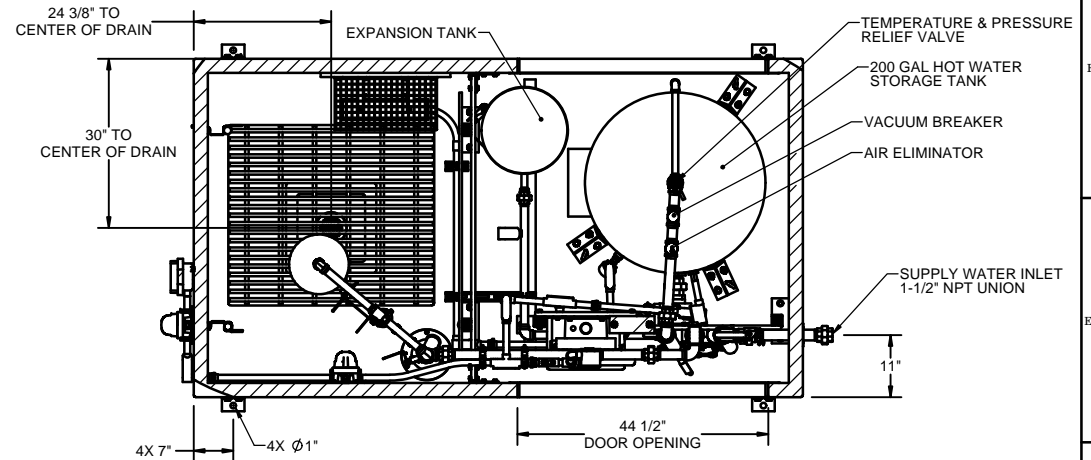
- NOTES:
1. DIMENSIONS IN US INCHES.
 2. ALL TOLERANCES: 1/2"
 3. AREA CLASSIFICATION: UNCLASSIFIED
 4. MATERIAL:
PIPE - GALVANIZED SCHEDULE 40
FITTINGS - GALVANIZED CLASS 150
VALVES - BRONZE
 5. ESTIMATED WEIGHT: DRY - 3250 LBS / WET - 6700 LBS



THE ATTACHED DESIGNS ARE CONSIDERED TRADE SECRETS AND POTENTIALLY PATENTABLE. IN ACCORDANCE WITH CONFIDENTIALITY AND NON-DISCLOSURE AGREEMENT, THESE DESIGNS IN ACTUAL OR CONCEPTUAL FORMS CANNOT BE DISCLOSED, REPRODUCED OR USED WITHOUT HAWS' EXPRESS WRITTEN CONSENT.

APPROVALS		DATE	BILL OF MATERIAL	
DESIGNED	BY	12/22/15	Haws	
CHECKED	BY	12/22/15	1455 KLEPPER LANE SPARKS, NEVADA 89431 USA	
APPROVED	BY	12/22/15	TITLE	
CUSTOMER INFO TAG #:			TEMPERING BOOTH W/ SHOWER-EYEWASH	
NOTICE OF PROPRIETARY INFORMATION			THIRD ANGLE PROJECTION	
INFORMATION CONTAINED HEREIN IS THE PROPERTY OF HAWS CORPORATION AND THE DOCUMENT AND THE DATA DISCLOSED HEREIN CAN BE REPRODUCED OR TRANSMITTED IN ANY FORM OR BY ANY MEANS, ELECTRONIC OR MECHANICAL, INCLUDING PHOTOCOPYING, RECORDING, OR BY ANY INFORMATION STORAGE AND RETRIEVAL SYSTEM, WITHOUT THE EXPRESS WRITTEN PERMISSION OF HAWS CORPORATION.			INSTALLATION	
SCALE	SIZE	PART NO.	REV	1
1/4"	C	8710.25.31		

- NOTES:
 1. DIMENSIONS IN US INCHES.
 2. ALL TOLERANCES: 1/2"
 3. AREA CLASSIFICATION: C1D2 GROUP B,C,&D T2D
 4. MATERIAL:
 PIPE - GALVANIZED SCHEDULE 40
 FITTINGS - GALVANIZED CLASS 150
 VALVES - BRONZE
 5. ESTIMATED WEIGHT: DRY - 3250 LBS / WET - 6700 LBS



THE ATTACHED DESIGNS ARE CONSIDERED TRADE SECRETS AND POTENTIALLY PATENTABLE. IN ACCORDANCE WITH CONFIDENTIALITY AND NON-DISCLOSURE AGREEMENT, THESE DESIGNS IN ACTUAL OR CONCEPTUAL FORMS CANNOT BE DISCLOSED, REPRODUCED OR USED WITHOUT HAWS' EXPRESS WRITTEN CONSENT.

APPROVALS		DATE	BILL OF MATERIAL	
DESIGNED	12/22/15	12/22/15	Haws® 1455 KLEPPE LANE SPARKS, NEVADA 89431 USA	
CHECKED	12/22/15	12/22/15	TITLE	
APPROVED	12/22/15	12/22/15	TEMPERING BOOTH W/ SHOWER-EYEWASH	
CUSTOMER INFO TAG #:			NOTICE OF PROPRIETARY INFORMATION	
000000			INFORMATION CONTAINED HEREIN IS THE PROPERTY OF HAWS CORPORATION AND THE DOCUMENT AND THE DATA DISCLOSED HEREIN CAN BE REPRODUCED OR TRANSMITTED IN ANY FORM OR BY ANY MEANS, ELECTRONIC OR MECHANICAL, INCLUDING PHOTOCOPYING, RECORDING, OR BY ANY INFORMATION STORAGE AND RETRIEVAL SYSTEM, WITHOUT THE EXPRESS WRITTEN CONSENT OF HAWS CORPORATION.	
SCALE			THIRD ANGLE PROJECTION	
1:24			INSTALLATION	
PART NO.			REV	
8710.25.32			1	