

FL Series – Flow Switch with Connection Head

Model: FL-A122-4-2-D-WL-M20

Flow Switch – None Certified

The FL-A Series Flow Switch is an ultra-compact instrument which is engineered from 316 stainless steel including all wetted parts. Designed to monitor the flow of liquid in ½" to 2 ½" pipe it is available certified to all global protection standards for use in Hazardous Areas.

This FL-A-WL version utilises our unique 316 stainless steel Wireable Connection Head with an M20 x 1.5 conduit entry port provided on the side. This eliminates the requirement for an external junction box and associated fitting kit by allowing the incoming cable to be connected directly at the back of the switch. The side entry port version provides benefits to applications where space is at a premium along the switch axis and improved cable management is required.

Each flow switch is supplied pre-installed into a 1 1/4 BSPT 316 Stainless Steel tee.



Properties	
Body Style	Cylindrical with Wireable Connection Head
Body Material	Stainless Steel 316L
Wetted Part Material	Stainless Steel 316L
Contact Arrangement	DPCO / DPDT (2x Form C)
Contact Material	Silver
Maximum Current	4A (24A In-rush) @ 24VDC / 110VAC / 230 VAC
Connection	Side Entry
Conduit Entry	M20 x 1.5
Mounting Pipe Size	1 1/4" BSPT
Hazardous Location	-
Gas Group	-
Dust Group	-
Temperature Class (T Rating)	-
Operating Temperature	-60°C to +120°C
Environmental Protection	IP 66, 67
Maximum Working Pressure	138bar / 2000psi

Flow Indication Points		
Tee Size	Actuation (Rising flow)	Deactivation (Falling Flow)
1 1/4"	10.0 - 11.4 l/min (2.6 - 3.0 USgpm)	5.0 - 6.0 l/min (1.3 - 1.6 USgpm)

Flow rates quoted for water at 20°C.

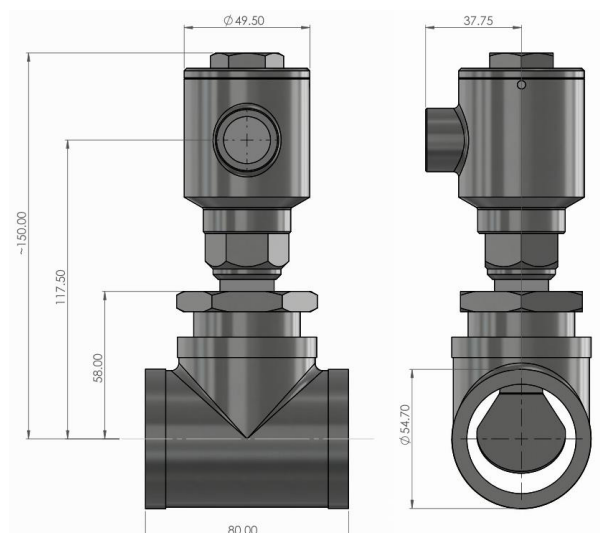
Connection

6	Normally Closed II
5	Common II
4	Normally Open II
3	Normally Closed I
2	Common I
1	Normally Open I
⊥	Earth

Provided with WAGO Cage Clamp terminals.
Suitable for conductors 0.08-2.5mm² / 28-12 AWG.



Dimensions



Certifications and Approvals		
Certification	Compliance	Certificate No.